

Albury Matters



The Albury Parish Council Quarterly Newsletter
Serving Albury, Farley Green, Brook, Little London & Newlands Corner

Spring 2011

Volume 2, Issue 1



Albury Photos, courtesy John Powell

Inside this issue:

The Chairman's Annual Report Nick Wenman	Page 1
Village Hall Make - Over John Brockwell / Roy Hogben	Page 1
SITA & Gasrec Up-date	Page 2
ANNUAL ASSEMBLY - Invitation	Page 3
History Society Snippet William Foulkes	Page 3
Your Candidates, Your Choice.....	Page 4
The Role and Responsibilities of Councillors Joanna Cadman	Page 4

The Chairman's Annual Report

The Parish Council is now coming to the end of its four-year term and on 5th May you will have the chance of electing nine Councillors from the eleven candidates nominated.

Many of you probably have a picture of the Vicar of Dibley when you think of parish councils, and in part you are probably right! But my experience of Albury Parish Council during the last four years is overwhelmingly positive with significant progress being made on a number of important parish issues. Parish councils are about to be given significant new powers through the Localism Bill and it is therefore all the more important that they are a properly elected body representing the parish as a whole.

So what have we achieved in 4 years?

Well, it's not all gone smoothly and a number of you will remember the Grand Designs project that was abandoned as a result of significant public objection from residents in the village. I certainly don't want to dwell on this but it was a difficult time and lessons were learnt. The good news is that a Parish Plan committee has

emerged from this under the independent chairmanship of William Moorwood, with the aim of developing a vision for the parish for the next 10 years.

There have been some big issues facing our parish since we were elected and the Parish Council has played its part in addressing these:

- Together with SaveBlackheathCommon we were successful in persuading Star Energy to site their proposed gas processing plant outside of Albury, and last year we worked with Star to minimise the disruption of their appraisal drilling. It is however important to note that Star potentially still pose a significant threat to the tranquillity of Albury. We will be vigilant in assessing any future plans they put forward for gas storage.
- The Landfill remains an unsightly blot on our landscape and all too often we are faced with a dreadful odour in the village. Birds are also a nuisance and the A25 is often littered with rubbish. The good news is that SITA is now forecasting that

Continued on Page 2

Special points of interest:

- SITA and Gasrec Briefing
- Village Hall Make - Over
- Annual Assembly, 18 April
- Your Candidates Your Choice.....
- Councillors Role

Village Hall and Car Park Make-Over

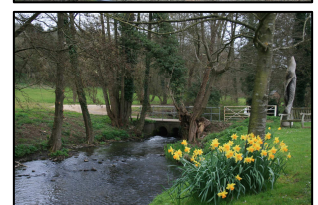
As part of the programme to re-vitalise the appeal of the village hall, almost £20,000 has been spent on up-grading the facilities.

A new boiler has been installed & the central heating system extended into the newly painted Memorial Library, secondary glazing will now help cut down the heat loss, whilst a new computerised booking system, electronic security and up-graded kitchen facilities will all help with future bookings.

The new village hall sign now complements the re-furbished car-park and clearance of the banks of the Tillingbourne.

*All of this has been achieved at **no cost** to the Parish with kind grants from **Star Energy, Guildford Borough Council and Rural Access to Services Programme (RASP).***

John Brockwell / Roy Hogben





The Chairman's Annual Report (Cont/d)

the landfill will be full later this year and a restoration plan has finally been submitted to Surrey County Council for approval. It will take at least 5 years to complete the restoration but hopefully the problems of odours and the rubbish mountain will be resolved this year.

- We regularly put a lot of pressure on SCC about the state of our roads and we have had some success over the years with real improvements to Guildford and Shophouse Lanes. The flooding problems in Little London, Westonfields and Farley Green have also been addressed. I've no doubt that the state of our roads will remain a big issue for us, especially given the cuts to local government spending.
- Hopefully, you will have noticed an improvement to the general appearance of the parish. Together with Surrey Hills AONB we have removed as much clutter as possible, including old metal railings and unnecessary signage, and replaced the metal & plastic with green oak posts. We also have new signs at the entrances to Albury Village and Farley Green and, with the help of Albury Trust, we have refurbished the Canadian War Memorial at Albury Heath. There is also a new oak bus shelter at Boundary Cottages and a new bench will soon be in place at the Sherbourne bus stop. The pond at Farley Green has at long last been cleaned, and you may have noticed that the BT phone box has been repainted after a 5 year battle with BT! Last but not least the disabled access to the recreation ground at Westonfields has been reinstated, and the dangerous fencing to the boundary of Albury House has been removed.

- We have spent a lot of time recently trying to make the Village Hall commercially viable. For some time now it has been running at a loss of around £10,000 each year and this is clearly unsustainable. We have therefore implemented a cost cutting exercise and have been successful in obtaining grants to reduce our running costs by installing a new boiler and secondary glazing. We have also been able to improve facilities, upgrade the car park and clear the area alongside the Tillingbourne, all at no cost to the parish. With the help of Nicola Johnson we have also increased our marketing efforts and bookings have subsequently increased. As a result we have been able to reduce the budgeted deficit to £5,000 for next year and I am hopeful that we will be able to break even the following year. Please do your best to promote this great facility.
- Communication with residents has been improved with the introduction of a website and the publication of a Quarterly Newsletter which I hope you find useful. We now need to further upgrade the website and this will be a priority for next year so that we can communicate information by e-mail and also maintain a register of vulnerable parishioners who may need help during inclement weather or if we are faced with a disaster.
- Finally, we have been successful in obtaining **Quality Status**, and are one of the first parish councils in Surrey to adopt the **Power of Wellbeing**. This will allow us to take on additional powers and initiate new capital projects as and when there is a need.



Nick Wenman at his Vineyard

There remains much to be done. There are specific issues that need to be addressed like the speed of traffic through Albury, the reinstatement of the bus stop next to Mill House, regeneration of the Albury allotments, and other innovative ideas. We also need to develop a plan for our local environment following on from the recent Greening Campaign. Generally I hope that the new council will continue to do everything it can to improve Albury as an attractive and sustainable place to live, visit and work, whilst maintaining the tranquillity of our beautiful countryside.

I would like to thank the Vice-Chairman John Brockwell, my fellow councillors and, of course, the parish clerk Joanna Cadman, for all their hard work during the last four years. I'm sure that those of us who are re-elected will continue to do our best for Albury.

Nick Wenman, Chairman



Gasrec Up-Date:

In the past two years Gasrec has achieved the doubling of the number of vehicles operating in the country, which had been around 400-500 when they started and is now in the region of 1,000. Gasrec is now selling liquid biomethane fuel to a number of large companies including Tesco and Coca-Cola, concentrating on haulage and public

sector vehicles. Albury is the only gas extraction site in the country at present, but Gasrec is in discussion with SITA about other sites and, after a couple of difficult start-up years, are looking to the future with confidence.

Gasrec is aware of the concerns over odours from the site, and gas is being pulled off to full capacity. The proposed new leachate treatment plant will remove some of the issue and it is planned to drill more wells to extract more gas. The last cell of the SITA Landfill will be capped by the end of the year, and gas extraction on that cell can then start. The odours are not caused by Gasrec but the company does take responsibility, together with SITA, for working towards eliminating them.

Gasrec Liaison Committee/Joanna Cadman

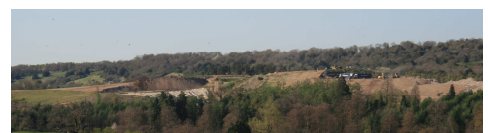
SITA Landfill Site:

The company hopes to complete filling of the last cell within the next few months so that full restoration can begin in earnest. Certainly the western end of the 25 hectare site which is capped and grassed looks like a promising start. Once the shrubs and trees are planted the end result should be almost invisible in the surrounding countryside.

The full Restoration Application is due to be presented to the SCC County Planning & Regulatory Committee on 22 June.

It is planned that at the next Liaison Group meeting the Environment Agency will be there to discuss the odour problems.

SITA Liaison Committee





Special Invitation

Albury Annual Assembly

Monday 18 April, 7.00pm, Albury Village Hall

Join us for a glass of wine and some nibbles before we settle down to hear from the **Village Societies***, their activities over this last year and plans for the next. We will also have a report from **The Albury Estate** and a presentation from the **Guildford Quilters** (who have just started using our refurbished village hall for their meetings). The meeting starts with a presentation from the **Surrey Wildlife Trust**.

Please join us for this very sociable evening!

**Albury Trust, Cricket Club, Friendship Club, History Society, Parish Church, Produce Association, Saxon Church, Women's Institute*



A snippet from the History Society...

The photograph shows a scale model of the Albury Mill which was destroyed by fire early in the 19th century. The model was used in the trial of the arsonist who was the last man to be hanged for arson!

William Foulkes, History Society

Stop Press.....

The Guildford Borough Mayor's Award for **'Service to the Community'** has been awarded to Councillor **John Brockwell**. He will be presented with the certificate later this month at the Guildhall in Guildford.

Canadian Memorial Restoration



The restored benches and maple trees at the Canadian Memorial on Albury Heath. This was a joint project between the **Albury Trust** and the **Parish Council**.



Peter Gellatly leads the way!

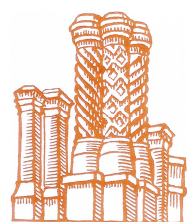
This year's 'Walkfest'

A six-mile walk from the Albury Cricket Club car park, over Blackheath to Winterfold and then around to Little London, with the option of either calling in at the William the IVth around lunch time or continuing back to the car park. It is scheduled for Wednesday, 27th July starting around 10.00am.

Albury Parish Council..... at your service:

- Nick Wenman (Chairman)..... 01483 202 017
- John Brockwell (Vice-Chairman)..... 01483 203 586
- Peter Gellatly (Planning)..... 01483 202 689
- Prue von Radowitz (Facilities)..... 01483 202 003
- Roy Hogben (Community Development)..... 01483 202 636
- Jackie Chapman..... 01483 203 475
- Grahame Robinson..... 01483 203 704
- Sallianne Robinson (Village Hall)..... 01483 205 485
- Joanna Cadman (Parish Clerk)..... 01483 268 627

- nick@wenmans.com
- John.brockwell@dsl.pipex.com
- peter@lockhurst-hatch-farm.co.uk
- pruvon@yahoo.co.uk
- royhogben@alburypark.com
- Jaquichapman@aol.com
- Hoff-man@tiscali.co.uk
- rantsal@btinternet.com
- Joanna@joannacadman.com





Your Candidates.....Your Choice

Albury Parish Council Elections, 5 May



John Brockwell

An active and fully committed A.P.C. councillor since 2004 I am currently Vice-Chairman, also Finance Committee Chairman, and a representative on the Star Energy and Landfill Liaison Groups. I have lived in Little London since 1988.



Sallianne Robinson

I have lived in Albury for 9 years, leading and managing a local nursery school. I am keen to build on the community spirit and wish to continue as a committed participant of the Parish Council.



Jackie Chapman

For the last 9 years I have been on the Parish Council and at present I sit on the Village Hall and the Community Development Committees. I was born in the Village and have been the Postmistress for 10 years.



Prue Von-Radowitz

I have lived in Farley Green for 38 years and been a parish councillor for sixteen, six of those years as chairman. My interests lie particularly in the countryside and the preservation of rural England.



Richard Morgan-Evans

I have lived in the village with my family for twenty years and my passion is farming, horses and sheep. I would like to be more involved in local affairs and to be able to help people.



Nick Wenman

I have enjoyed being part of the community and the Parish Council. If re-elected I will continue to challenge organisations like SITA & Star, put pressure on Guildford & Surrey Councils, and support innovative ideas that benefit Albury.



Peter Gellatly

I have lived with my family in Farley Green virtually all of my life. I have been active on the Parish Council for the last six years and care very much for the area, its future and the impact of the inevitable changes that must occur.



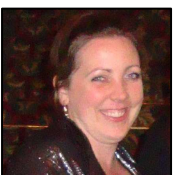
Katie Kinnes

A working mum of two girls aged four and 17 months, I moved to Albury from Merrow five years ago. My husband Rob has been involved with Albury Cricket Club for many years both as a player and supporter.



Roy Hogben

As the present Community Development Chairman of A.P.C. and Editor of "Albury Matters" I have successfully engaged with ideas of Parish enhancement through outside funding, and, if re-elected, I will continue to put Albury first.



Ali Kerslake

My family has been in the village for over thirty years and I grew up around here. I live with my husband and 2 children in Church Lane.



Grahame Robinson

I have lived with my family in Albury for the last 25 years and appreciate that the smallest change in village life can have the biggest impact which is why a Parish Council is so important.

The Role and Responsibility of a Parish Councillor

The Council is a corporate body, a legal entity separate from that of its members. Its decisions are the responsibility of the whole body (in other words, the Councillors). The Council is granted powers by Parliament, including the authority to raise money through taxation and a range of powers to spend money. It can play a vital part in representing the interests of the community it serves and improving the quality of life and the local environment.

Once elected, councillors have a range of responsibilities which include a duty to attend meetings when summoned to do so, consider the agenda and any related documents in advance of the meeting; take part in meetings and consider all the relevant facts and issues on matters which require a decision; take part in voting and respect decisions made by the majority; and represent the whole electorate, not just those where they live or those who voted for them. Councillors must also treat others with respect, comply with equality legislation, not bully or intimidate anyone, not disclose confidential information, not bring the council into disrepute by their conduct and not use their position or the council's resources for improper purposes.

An awful lot of duties and a lot of 'nots'! On top of that, councillors are not paid for their time nor their work, nor do they receive expenses, although they are, of course, reimbursed for costs incurred on the council's behalf, agreed beforehand.

There is no doubt that the job of a councillor is a very rewarding one: a councillor has the opportunity to be closely involved in the welfare of the village, to make decisions to improve its visual aspect, safety, economic viability, and the welfare of its residents, as well as protecting and enhancing the very special environment, including liaising with SITA (landfill), Gasrec (gas extraction) and Star Energy (gas exploration). There is the opportunity to get involved in the things that interest you and to which you can bring knowledge and skills.

Your Council and its members work hard on your behalf - so please come out and vote for them on the 5th May!

Joanna Cadman, Parish Clerk